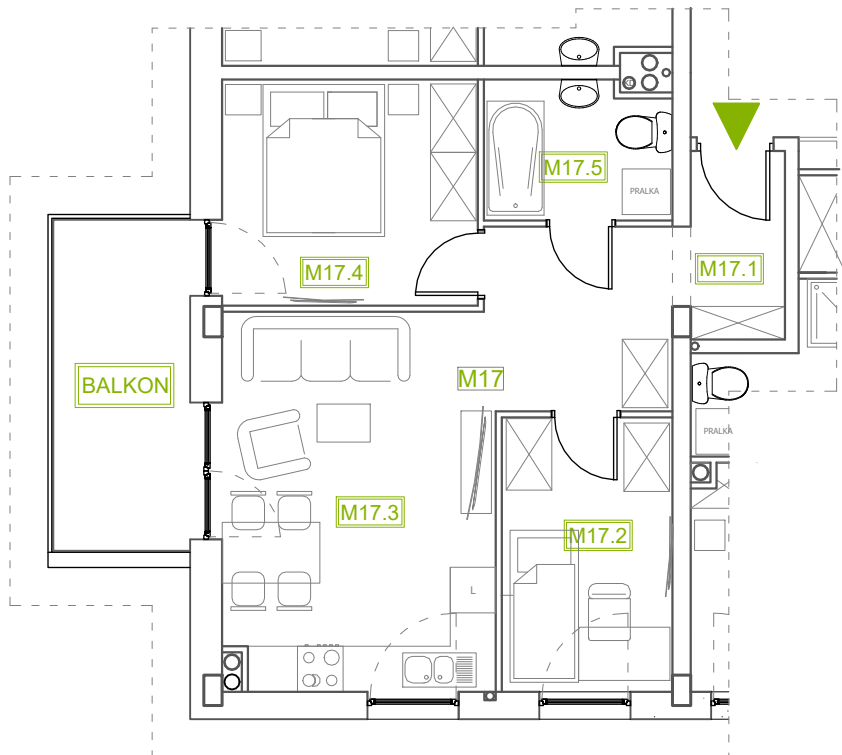


# Mieszkanie B2M17

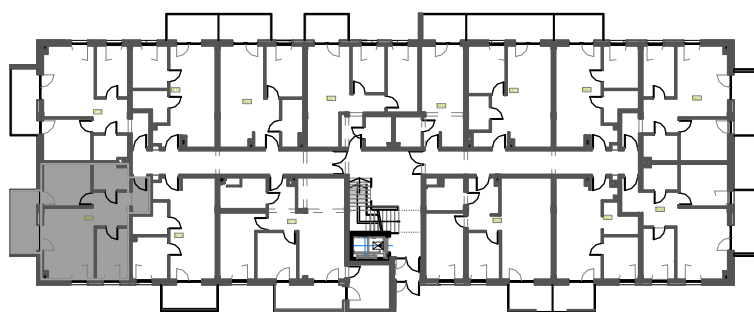
Piętro I, Budynek 2



## Mieszkanie B2M17

|                             |                           |
|-----------------------------|---------------------------|
| Klatka                      | 1                         |
| Piętro                      | 1                         |
| Liczba pokoi                | 3                         |
| M17.1 Przedpokój            | 8,92m <sup>2</sup>        |
| M17.2 Sypialnia 1           | 7,93m <sup>2</sup>        |
| M17.3 Salon z an. kuchennym | 17,54m <sup>2</sup>       |
| M17.4 Sypialnia 2           | 9,82m <sup>2</sup>        |
| M17.5 Łazienka              | 4,28m <sup>2</sup>        |
| <b>Suma</b>                 | <b>48,49m<sup>2</sup></b> |
| + Balkon                    | 7,84m <sup>2</sup>        |

## Rzut kondygnacji: PIĘTRO I



SKALA RZUTÓW:

